



Picture: Version with display

Features

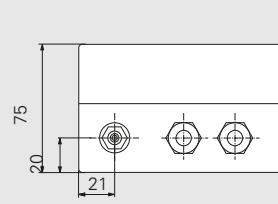
- Precise absolute pressure transmitter
- AD: for absolute pressure
- BA: for atmospheric pressure
- High level of accuracy and long-term stability
- Little zero-point drift or hysteresis; largely independent of temperature
- The size of the optional display can be adjusted (reduced) in the factory to correspond to the height of the installation site, see DIN ISO 2533 (only BA 1000)

| | |
|------------------------------------|--|
| Measurement accuracy ¹⁾ | ± 1% of measurement range |
| Temperature coefficient span | max. 0.04 % FS/K |
| Temperature coefficient zero point | max. ±0.04 % FS/K |
| Calibration temperature | 22 °C ± 4 K |
| Operating temperature | 10 .. 60 °C |
| Lagertemperatur | -10 .. 70 °C |
| Signal stability | 0.3 hPa/year |
| Reduction | 0 .. 850 m above sea level (only BA 1000) (please indicate when placing your order) |
| Power consumption | approx. 3 VA |
| Cable glands | 2 x PG 7 (housing without display) clamping range Ø 3 ... 6.5 mm 2 x PG11 (housing with display) clamping range Ø 5 ... 10 mm |
| Protection class | BA 1000: IP53; AD 1000: IP54 |
| Weight | approx. 0.6 kg |
| Pressure ports ²⁾ | for tubing NW 6 mm |
| Certificates | CE/UKCA |

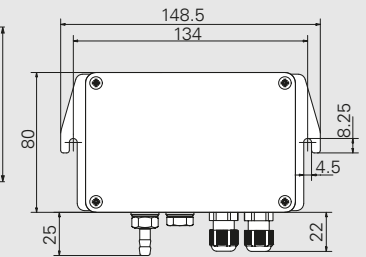
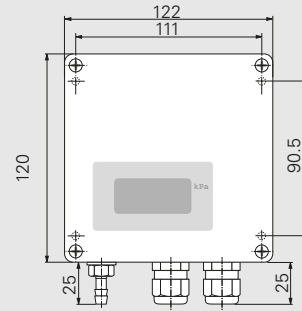
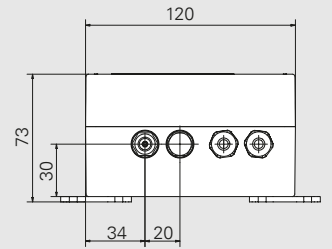
¹⁾ Reference ± 0.5 hPa with respect to sea level

²⁾ AD 1000: 1 pressure port, BA 1000: no pressure port

AD/BA 1000 with display



AD/BA 1000 without display



AD 1000: 1 pressure port
BA 1000: no pressure port

All dimensions in mm

| Order code | A | B | C | D | E | F |
|------------|---|---|---|---|---|---|
|------------|---|---|---|---|---|---|

| Product | Measurement range | A |
|---------|-------------------|------|
| AD 1000 | 0 .. 50 kPa | 50A |
| | 0 .. 100 kPa | 100A |
| | 80 .. 120 kPa | 80A |
| | 90 .. 110 kPa | 90A |
| | 100 .. 0 kPa | 0A |
| BA 1000 | 80 .. 120 kPa | 80B |
| | 85 .. 115 kPa | 85B |
| | 90 .. 110 kPa | 90B |
| | 95 .. 115 kPa | 95B |

| Output | B |
|---|---|
| 0 .. 10 V ($R_L \geq 2 \text{ k}\Omega$) | 1 |
| 0 .. 20 mA ($R_L \leq 500 \Omega$) | 0 |
| 4 .. 20 mA ($R_L \leq 500 \Omega$) | 4 |

| LCD | D |
|-----------|---|
| none | 0 |
| 3 ½ digit | 3 |

| Reduction ³⁾ | E |
|---|---|
| none | 0 |
| please indicate in meters (e.g. 2 m) ³⁾ | |

| Power supply | C |
|-------------------------------|-----|
| 24 VDC, + 20 % / - 15 % | 24D |
| 24 VAC, ± 10 % (50/60 Hz) | 24A |
| 115 VAC, ± 10 % (50/60 Hz) | 115 |
| 230 VAC, ± 10 % (50/60 Hz) | 230 |

³⁾ only for BA 1000

| Calibration certificate | F |
|--------------------------------------|---|
| none | 0 |
| Factory calibration | W |
| Calibration according to DKDR-6-1 | D |